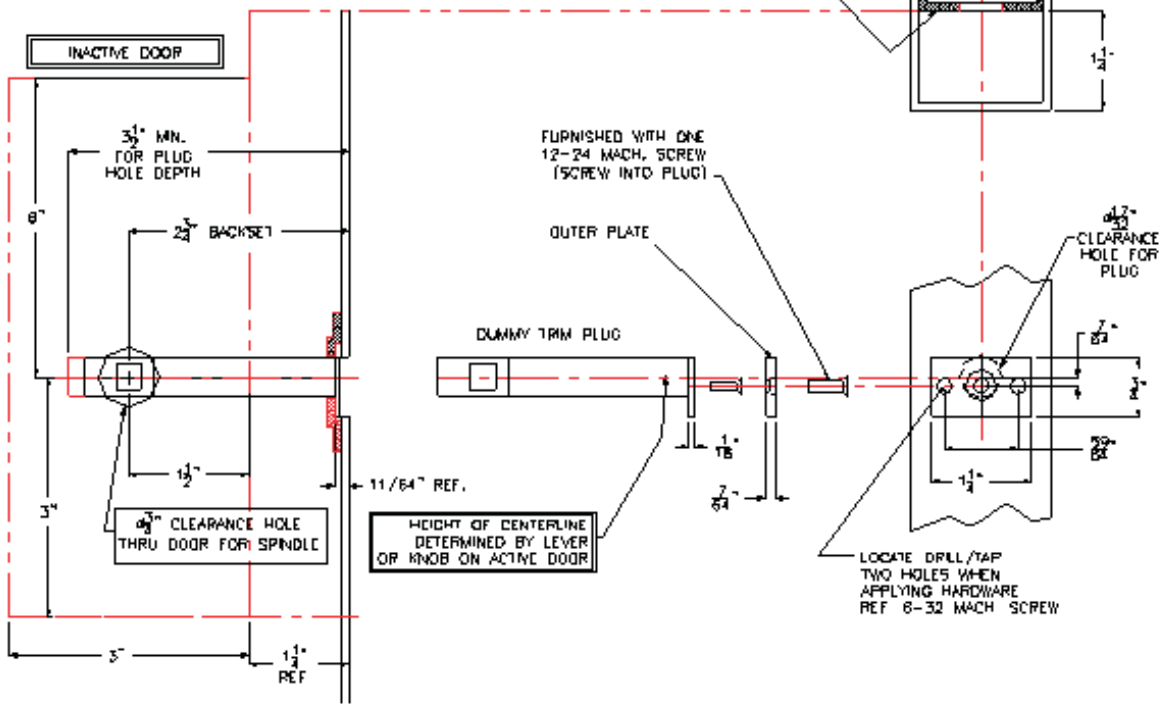
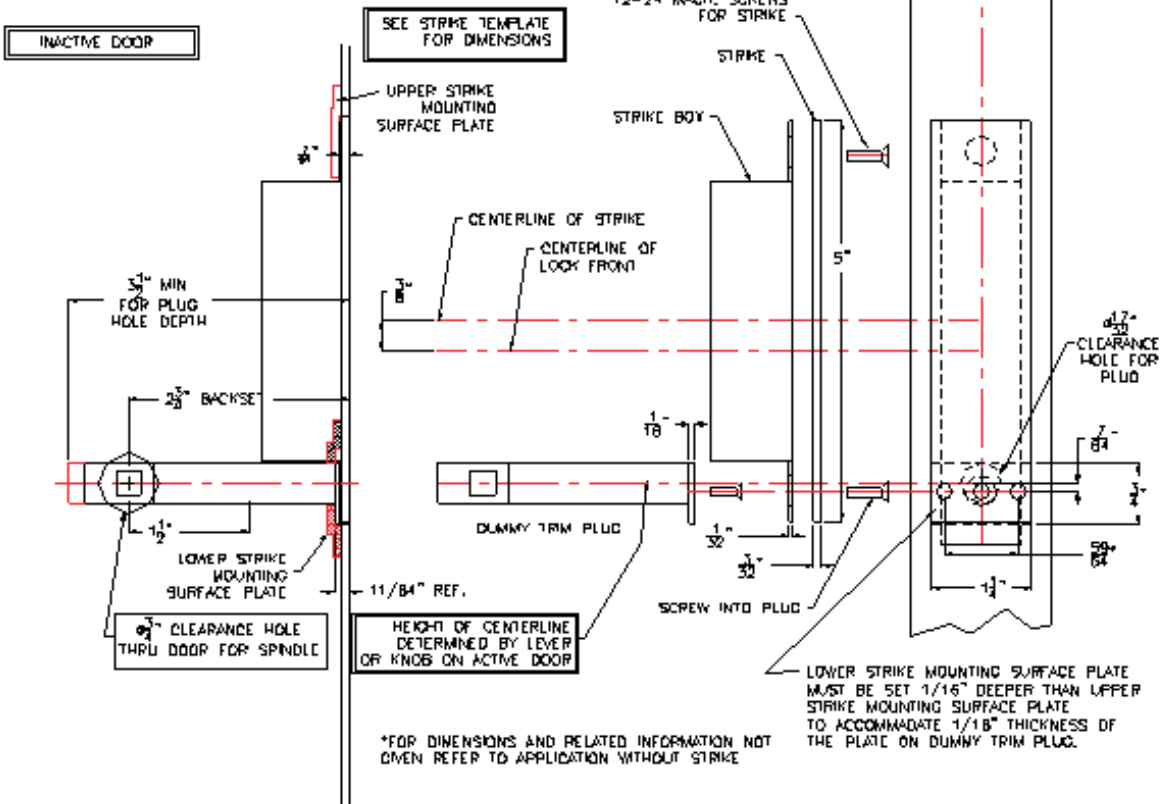


APPLICATION OF DUMMY TRIM PLUG USED ON INACTIVE DOOR WITHOUT A STRIKE

TO PREVENT BOWING OF DOOR SURFACES PROVIDE SUFFICIENT REINFORCEMENT FOR DUMMY TRIM PLUG AND SURFACE TRIM (SUCH AS ROSE / ESCUTCHEON) BEING USED WITH DUMMY TRIM.



APPLICATION OF DUMMY TRIM PLUG USED ON INACTIVE DOOR WITH A STRIKE



TOLERANCES UNLESS OTHERWISE NOTED: DECIMAL ± .005 . FRACTIONAL ± 1/64 . ANGULAR ± 90°

DATE 01.16.06	PRODUCT NAME DUMMY TRIM BM-08 & 09	CAT. No.	ARROW LOCK CO.
CHK. BY SF	PART NAME BM-08 & BM-09	PART No.	HICKSVILLE, N.Y.
APPD BY SF	MATERIAL	FINISH	DWG. No. BM-08 & 09
		REV.	

ALTERATIONS

DATE

REV.